



PowerView[®] U35

U35C-T-E-A0-QA & U35C-T-E-A0-QB (with mounting kit)

Installation Manual

To consistently bring you the highest quality, full-featured products, we reserve the right to change our specifications and designs at any time. The latest version of this manual can be found at support.enovationcontrols.com.

Warranty - A limited warranty on materials and workmanship is given with this Enovation Controls product. A copy of the warranty may be viewed or printed by going to www.enovationcontrols.com/warranty



BEFORE INSTALLING THIS ENOVATION CONTROLS PRODUCT:

Read and follow all installation instructions.

Please contact Enovation Controls immediately if you have any questions.



This product can expose you to chemicals including lead, which is known to the State of California to cause cancer. For more information, go to www.P65Warnings.ca.gov.

-Revision Table

Date	Description	Date	Description
2025-09-05	Initial Draft		
-			
-			

Table of Contents

Hardware Installation.....	5
Inspecting Package Contents.....	5
Surface-Mounted Installation.....	5
Flush-mounted Installation	6
Pinout Specifications	7
16Pin Connector A (Mating Connector AMP 770680-1 Black).....	7
5 Pin Connector-D (Mating Connector M-12, Ethernet)	8
Software Platform	8
Configuration Information	8
Specifications	10

THIS PAGE INTENTIONALLY LEFT BLANK

Hardware Installation

The following instructions will guide you through installing the PowerView® U35 display.

Inspecting Package Contents

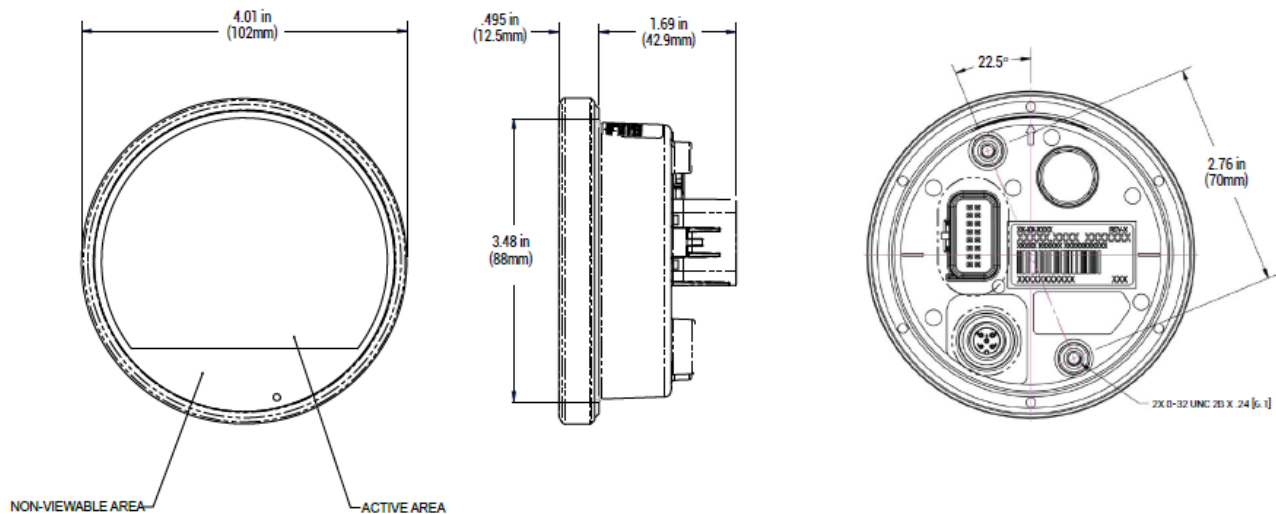
Before installing the product, it is recommended that you ensure all parts are accounted for and inspect each item for damage (which sometimes occurs during shipping). The items included in the box are:

- PowerView U35 3.5" unit

Surface-Mounted Installation

To properly mount the display, first prepare the dashboard:

1. Use the measurement diagram shown below to create a clearance cutout for the connectors.
2. Using the provided measurements drill two locating holes for the fasteners.
3. Secure the display to the panel using 8-32 fasteners. Thread depth on the display's brass inserts is 0.24". Do not use a locking adhesive that may be chemically incompatible with the plastic.



Hardware needed

- Two (2) 8-32 Fasteners

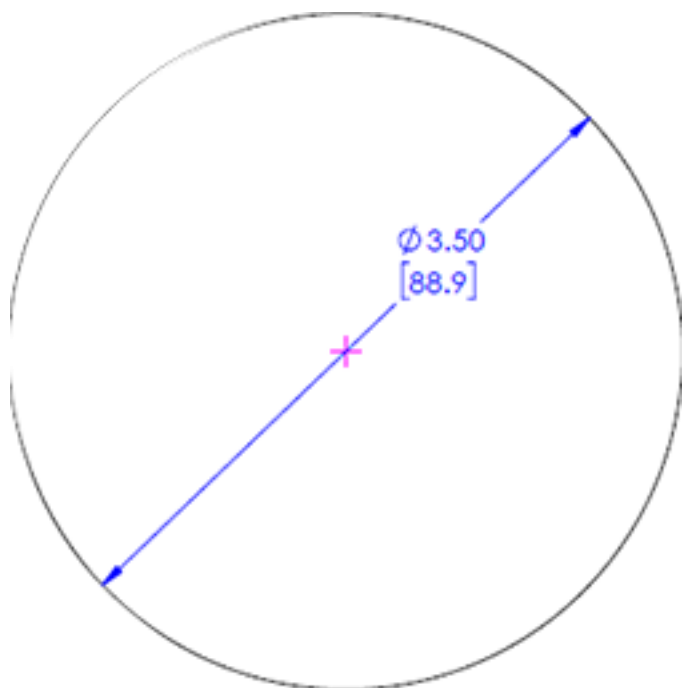
Tools needed:

- Rotating drill with a bit size of 18 (0.169).

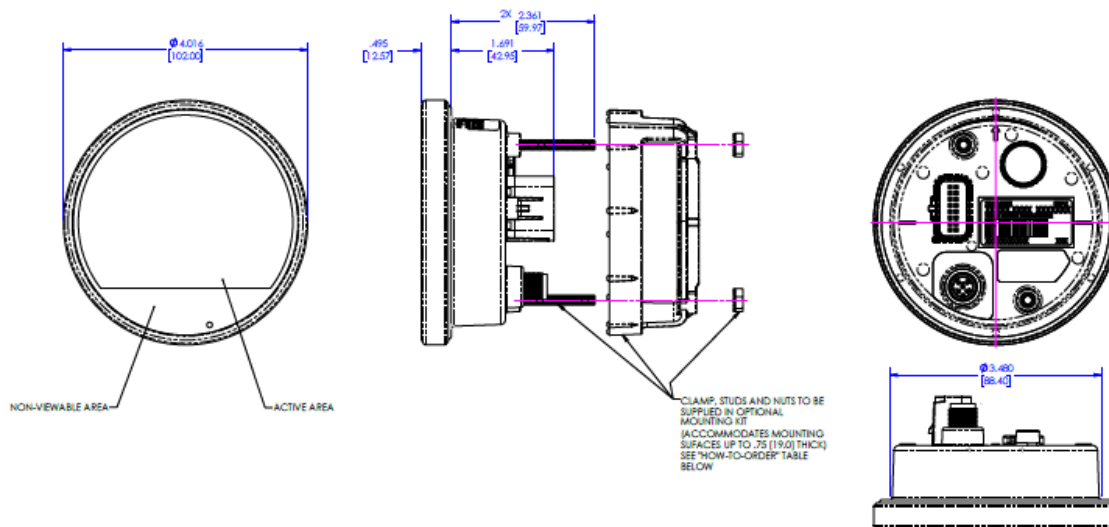
Flush-mounted Installation

Follow these instructions to install the display using the optional mounting kit (Bracket, Mounting Studs, Lock Nuts): Part Number 78001531, available through Enovation Controls.

1. Cut a mounting hole in the panel with the diameter shown in the true-to-size diagram shown below.



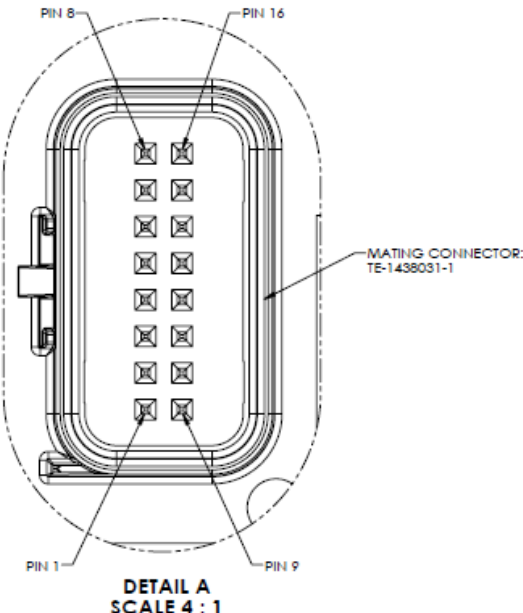
2. Insert the display from the front of the panel and use the mounting bracket with 8-32 locknuts to secure the display from the backside of the panel. These parts are supplied in the mounting kit.



Pinout Specifications

16Pin Connector A (Mating Connector AMP 770680-1 Black)

Pin	Function
1	N.C.
2	CAN Lo
3	CAN Hi
4	USB_N
5	USB_P
6	USB_VBUS
7	USB_GND
8	Battery
9	N.C.
10	N.C.
11	N.C.
12	N.C.
13	N.C.
14	USB_Shield
15	Ignition
16	GND



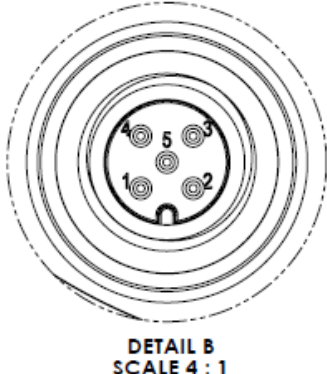
The diagram shows a top-down view of the 16-pin connector. It is a rectangular connector with a latch on the left side. The pins are arranged in a 4x4 grid. The pins are labeled as follows: PIN 8 (top left), PIN 16 (top right), PIN 1 (bottom left), and PIN 9 (bottom right). A label 'MATING CONNECTOR: TE-1438031-1' points to the connector. Below the diagram, it says 'DETAIL A SCALE 4 : 1'.

IMPORTANT NOTE:



Use a suitably sized fuse or circuit breaker to protect the wiring and display/controller in the event of an overcurrent fault condition. Consult the product specifications to obtain maximum power consumption during normal operating conditions.

5 Pin Connector-D (Mating Connector M-12, Ethernet)

Pin	Function	
1	Ethernet TX_P	
2	Ethernet RX_P	
3	Ethernet TX_N	
4	Ethernet RX_N	
5	GND	

Software Platform

Display is shipped with a bootloader only. The customer must create their own custom applications using PowerVision Configuration Studio®.

Demo Configurations / Examples available at support.enovationcontrols.com

Configuration Information

Follow these steps to download a custom configuration to the U35 display using a USB flash drive connected to the USB connector on the harness:

Step	Action
1	Turn off the display.
2	Insert the USB drive that contains the new configuration file into the USB pigtail on the harness.

Continued

Step	Action
3	<p>Place a strong magnet directly over the Ambient Light Sensor (ALS) depicted below and hanging slightly over the bottom of the display:</p> <div data-bbox="280 390 794 982"> </div> <div data-bbox="808 426 1325 932"> </div>
4	Power the display back on, continually holding the magnet in place.
5	<p>Remove the magnet when the display shows the utility for loading new software.</p> <div data-bbox="238 1136 875 1614"> </div>
6	Touch the up or down arrow keys on the screen until the appropriate configuration file from the USB to be loaded into the display is shown on the screen.
7	Press the right arrow/green arrow key on the screen twice to load the selected configuration.
8	Once completed, the unit will reboot into the loaded application.

Specifications

Computing	
Processor	Dual-Core A7 Processor at 1.0 GHz
Operating System	QNX® Realtime Operating System
Storage	8 GB Flash Memory
RAM	512 MB DDR3-SDRAM
Material & Finish	
Bezel	Stainless Steel – Black Powder Coat
Cover Glass	Soda Lime Glass, AG Etch
Housing	Plastic – Black
Display / HMI	
Screen	3.5-inch round, 24-bit color
Resolution	640 x 516
Contrast Ratio/Brightness	600:1 1000 cd/m ²
Touch Panel	Projected capacitive (PCAP) with glove touch
Surface	Anti-glare finish
Ambient Light Sensor	Yes
Interface	
CAN	(1) CAN
USB	(1) USB 2.0
Ethernet	(1) Ethernet

Continued

Electrical/Environmental	
Operating Voltage	6-36 VDC, reverse polarity protected
Operating Temperature	-22°F TO +158°F [-30°C TO +70°C]
Storage Temperature	-40°F TO +185°F [-40°C TO +85°C]
Protection	IP67
Vibration	Swept Sine (10-2000-10Hz) 10g Peak, 3 Axis, Random (10-2000Hz) 8.17g RMS, 3 Axis
Shock	±50G IN 3 Axis
EMC/EMI	(2014/30/EU)

In order to consistently bring you the highest quality, full-featured products, we reserve the right to change our specifications and designs at any time. MURPHY products and the Murphy logo are registered and/or common law trademarks of Enovation Controls, LLC. This document, including textual matter and illustrations, is copyright protected by Enovation Controls, LLC, with all rights reserved. (c) 2025 Enovation Controls, LLC. A copy of the warranty may be viewed or printed by going to www.enovationcontrols.com/warranty

ENOVATION CONTROLS CORPORATE HEADQUARTERS
5311 S 122ND EAST AVENUE
TULSA, OK 74146

ENOVATION CONTROLS LTD. – UNITED KINGDOM
CHURCH ROAD LAVERSTOCK
SALISBURY SP1 1QZ UK

SUN MURPHY INTERNATIONAL TRADING (SHANGHAI) CO., LTD
B15 ROOM, 6# BUILDING, 351 SIZHUAN ROAD
SONGJIANG DISTRICT, SHANGHAI 201601, CHINA

ENOVATION CONTROLS INDIA PVT. LTD.
PLOT NO. 146, SECTOR 10, PCNTDA
BHOSARI, PIMPRI CHINCHWAD
PUNE - 411026
MAHARASHTRA, INDIA

U.S. SALES & SUPPORT

PHONE: 918 317 4100
EMAIL: SALES@ENOVATIONCONTROLS.COM
WWW.ENOVATIONCONTROLS.COM

CONTACT US



INTERNATIONAL SALES & SUPPORT

EUROPE, MIDDLE EAST, AFRICA
PHONE: +44 1722 410055
EMAIL: EMEASALES@ENOVATIONCONTROLS.COM

CHINA
PHONE: +86 21 6237 5885
EMAIL: APACSALES@ENOVATIONCONTROLS.COM

INDIA
PHONE: +91 91581 37633
EMAIL: INDIASALES@ENOVATIONCONTROLS.COM



FM 28221 (Tulsa, OK - USA)
FM 29422 (UK)



1022QAP07 (India)