

AMACS GSM Remote Communication Panel

ys6338
revision B, 4th May 2007
catalogue section 30



- **Mobile phone, text message control of remote equipment**
- **Dual band GSM coverage**
- **Robust, sealed, lockable panel**

Description

The AMACS GSM is an add-on panel that provides remote, mobile phone based control of essential equipment. The system may be used in a range of vital applications:-

- Water level and irrigation control
- Prompt, automatic warning of plant faults
- Unauthorised entry/intrusion
- Vehicle theft
- Electrical equipment trip operation

Operation

At the heart of the AMACS system is a GSM data modem that allows text communication between the panel and a mobile phone. By sending SMS text messages from a mobile phone, a remote operator is able to configure the AMACS panel, request plant status information and operate the panel's relay outputs.

The two volt free relay outputs may be used to control remote equipment, e.g. to give engine or pump starting, valve operation, fault reset, etc. Remote text commands allow the outputs to be turned on, turned off, or give a 5 second 'pulse'.

The AMACS panel also has two inputs that can be activated by switch or relay contacts in the remote equipment, e.g. after an automatic engine start, or following a fault condition or other event. The inputs can be independently set so that activation or de-activation of each input causes the AMACS to send an appropriate, pre-programmed text message to the user's mobile phone.

The AMACS system is housed in a robust, lockable enclosure complete with a screw-fitted aerial. Cable access is through a plate in the panel base: when used with correct glands, the panel is environmentally sealed to IP54.

Product specification

Electrical:	
power supply voltage	9.5 to 14 VDC
power supply current	80mA (quiescent), <200mA (during GSM receive / transmit)
fusing	integral fuse (on circuit board), 1 Amp fast blow (20 x 5)
inputs x 2 outputs x 2	open from/close to negative DC (0V) volt free relay contacts (1 x SPCO, 1 x SPNO), rated 3A @ 240VAC / 24VDC (resistive load)
Network:	
network suitability:	suitable for all dual band GSM networks – Vodafone, O2, Orange and T-mobile
SIM card GSM coverage	replacable mini SIM card for GSM network dual band coverage suitable for UK, Europe and Asia/Pacific (not suitable for North and South American continents)
Mechanical:	
environmental sealing	IP54 with correct cable entry glands
temperature range	-10 to +50°C
weight	5.5 Kg
dimensions H x W x D	panel: 300 x 200 x 160 mm aerial: add 120 mm to height
mounting	wall mounted via internal fixings

Warranty

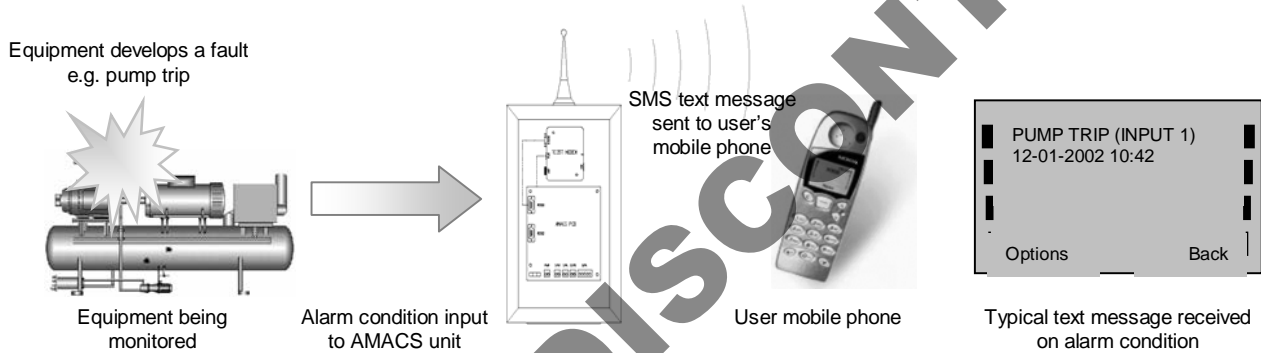
A one year limited warranty on materials and workmanship is given with this product. Full details are available on request and at www.fwmurphy.co.uk/warranty.

Communication and control

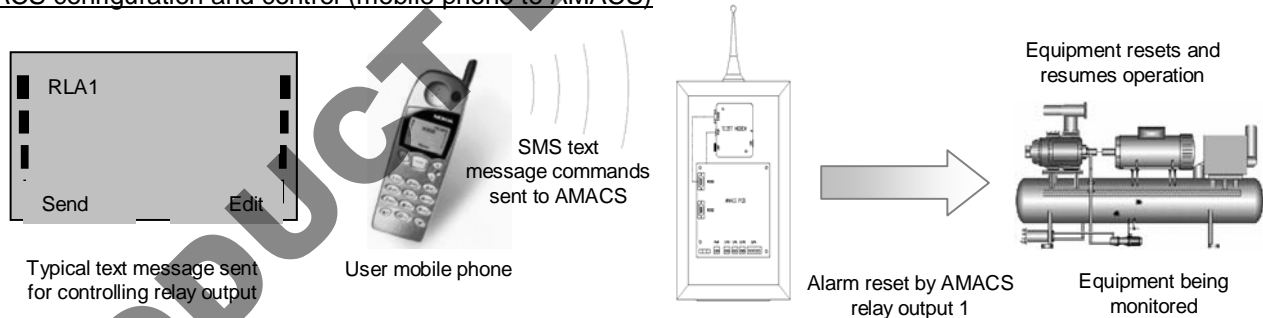
Configuration and control of the AMACS panel is by mobile phone SMS text commands:-

Command format	Function
TELA0123456789	Sets the primary dial-out phone number to which text messages are sent.
TELB0987654321	Sets an optional, secondary dial-out phone number.
IPAHabcdefgh	Sets the text message sent when input 1(A) goes 'high' (when input +ve terminal is connected to DC +ve). To prevent any dial-out/message, use command IPAH only (i.e. no message text).
IPALabcdefgh	Sets the text message sent when input 1(A) goes 'low' (when input +ve terminal is made open circuit). To prevent any dial-out/message, use command IPAL only (i.e. no message text).
IPBHabcdefgh	Sets the text message sent when input 2(B) goes 'high' (when input +ve terminal is connected to DC +ve). To prevent any dial-out/message, use command IPAH only (i.e. no message text).
IPBLabcdefgh	Sets the text message sent when input 2(B) goes 'low' (when input +ve terminal is made open circuit). To prevent any dial-out/message, use command IPAL only (i.e. no message text).
RLA1	Energises relay output 1(A)
RLA0	De-energises output relay 1(A)
RLAP	Energises output relay 1(A) for a 5 second 'pulse'. Relay A then de-energises automatically.
RLB1	Energises output relay 2(B) (contacts close)
RLB0	De-energises output relay 2(B) (contacts open)
RLBP	Energises output relay 2(B) (contacts close) for 5 second 'pulse'. Relay B then de-energises automatically.
STAT	After receiving this text command, AMACS hangs up then dials out with full status information.

a) Status or fault notification (AMACS to mobile phone)



b) AMACS configuration and control (mobile phone to AMACS)



How to order

Stock number	Description
31.70.0001	AMACS GSM communication panel



FRANK W MURPHY LTD.

Church Road, Laverstock, Salisbury, SP1 1QZ, United Kingdom

tel: +44 (0)1722 410055 fax: +44 (0)1722 410088

email: sales@fwmurphy.co.uk web: www.fwmurphy.co.uk



USA - ISO9001:2000 FM 28221
UK - ISO9001:2000 FM 29422

In order to consistently bring you the highest quality, full featured products, we reserve the right to change our specifications and designs at any time.