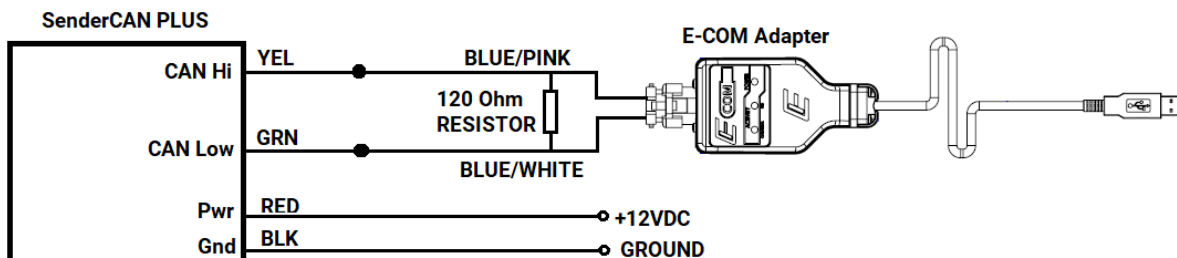


Installing Firmware in SenderCAN PLUS using the E-COM CAN Bootloader Utility

Hardware Required:

- 1) E-Com USB/CAN Adapter Harness P/N E2046014B
- 2) 12V Power Supply
- 3) Termination resistor (120 ohm)

Connections:

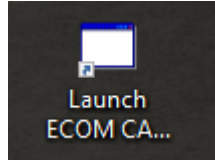


Software Installation:

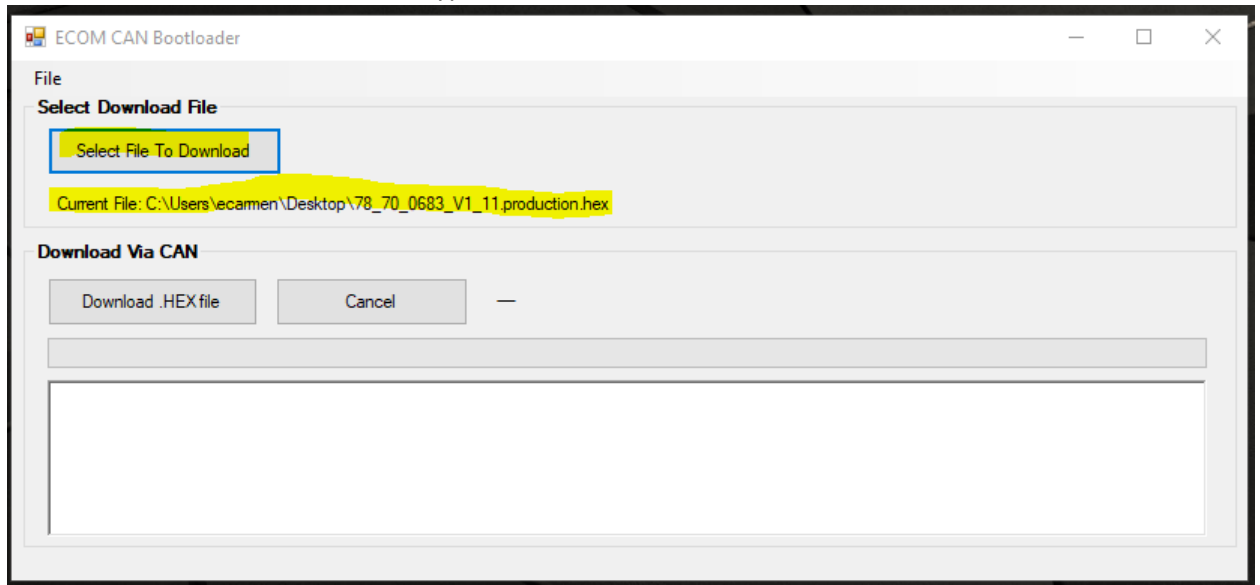
- 1) **Install the E-COM CAN Bootloader software.**
<https://enotechservstorage.blob.core.windows.net/helpcenterfiles/SenderCAN%20PLUS%20CAN%20Bootloader%20Utility/E-COM%20CAN%20Bootloader.zip>
- 2) **Install the E-COM driver.**
https://novationexpertsystem.blob.core.windows.net/mcxcodesys/ECOM_Driver_Setup_V3.5.0.0.exe

Programming Steps:

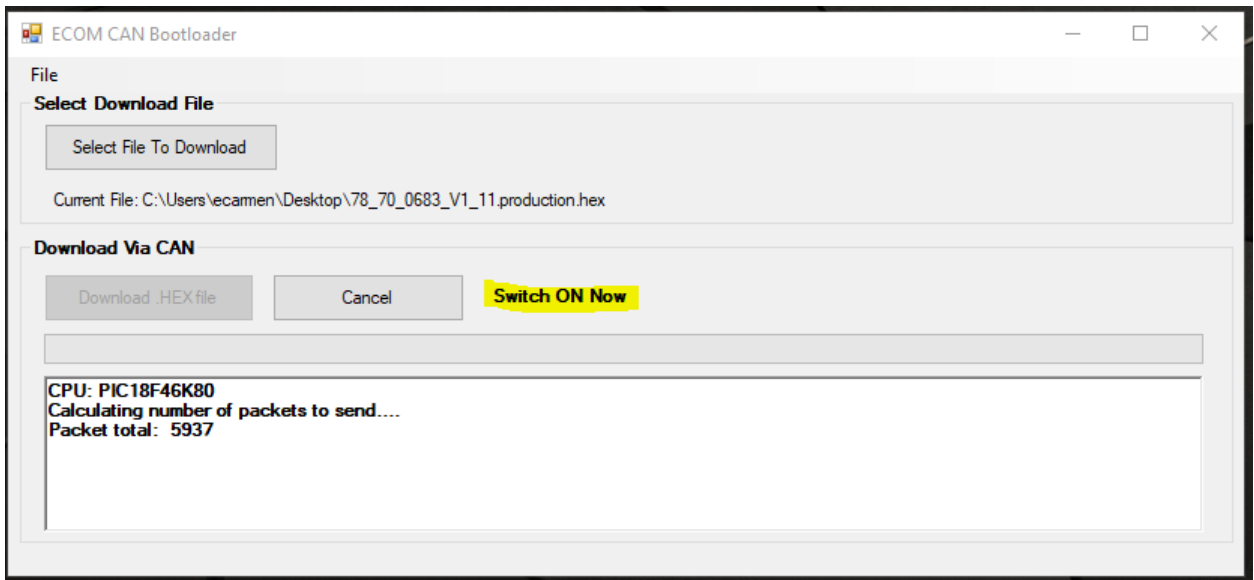
- 1) Launch the E-COM CAN Bootloader Utility, there should be an Icon located on your desktop.



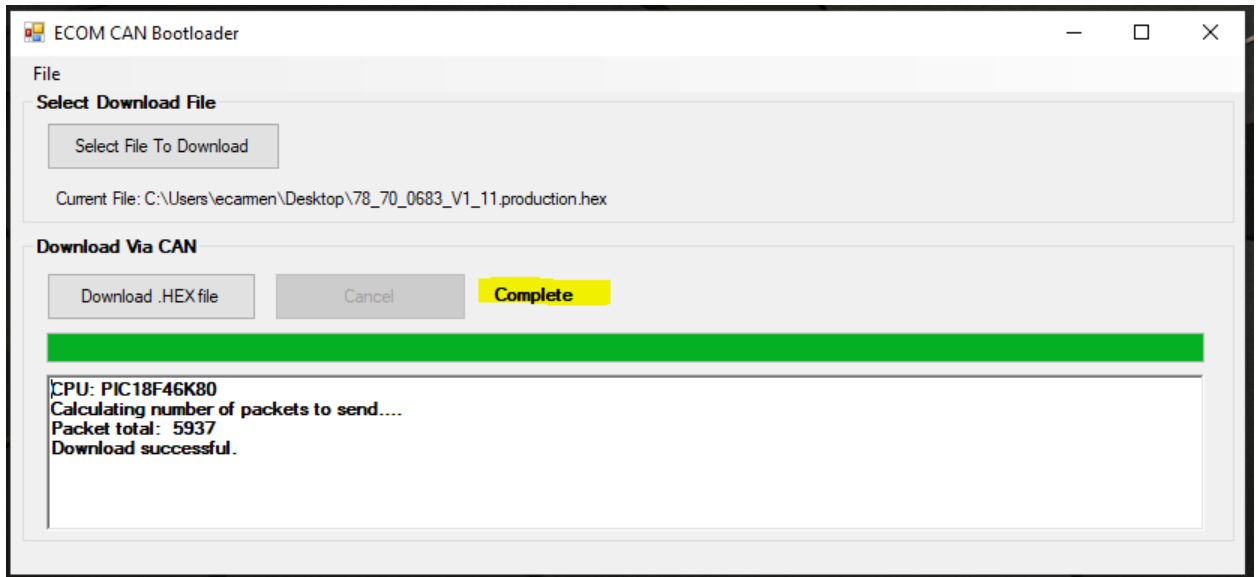
- 2) Select File to download – The file type will be .Hex



- 3) **Start the Download** - Select “Download Hex File” then apply power to the SenderCAN. If power is already on, turn it off then back on. The SenderCAN will only connect withing the first few seconds after a power cycle.

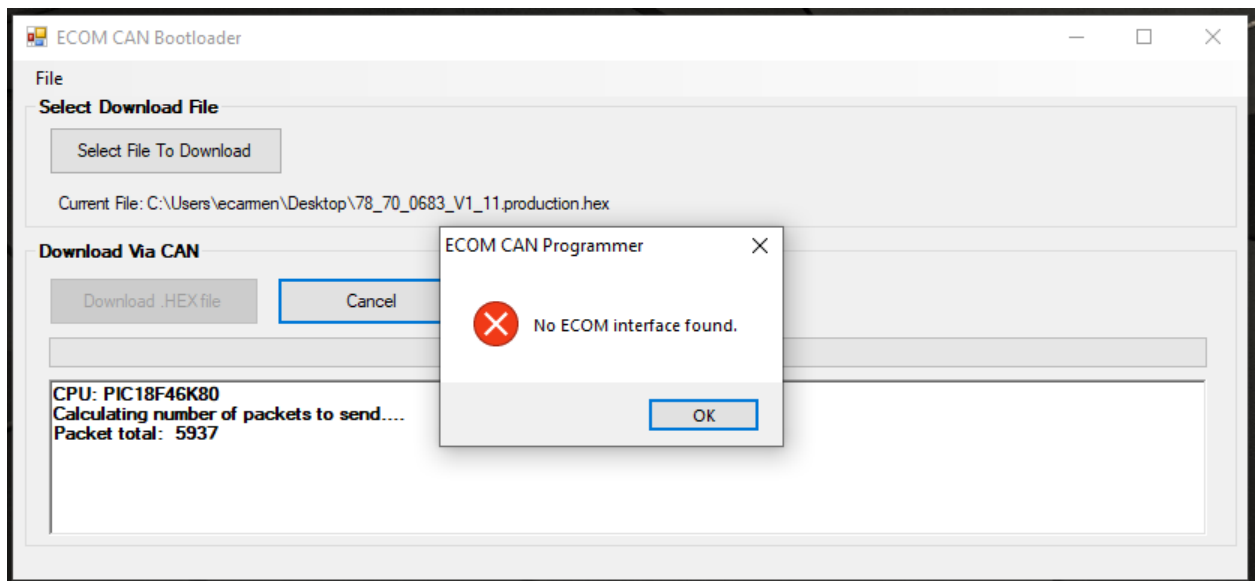


- 4) **Update Complete** - Wait for progress bar to go to 100% and the status indicates Complete, this will take 1-2 minutes.



Troubleshooting:

- 1) **E-COM USB/Adapter issues** – if the adapter is not found or driver not installed you will receive this error message. Verify driver has been properly installed and E-Com cable is plugged into the computer.



- 2) **CAN Communication Issues** – If a termination resistor is missing, connection missing, or CAN Hi and Low are wired backwards the program will wait at the “Switch On Now” status message and not connect with the SenderCAN. Cycle the power if it does not connect within the first 10 seconds..

