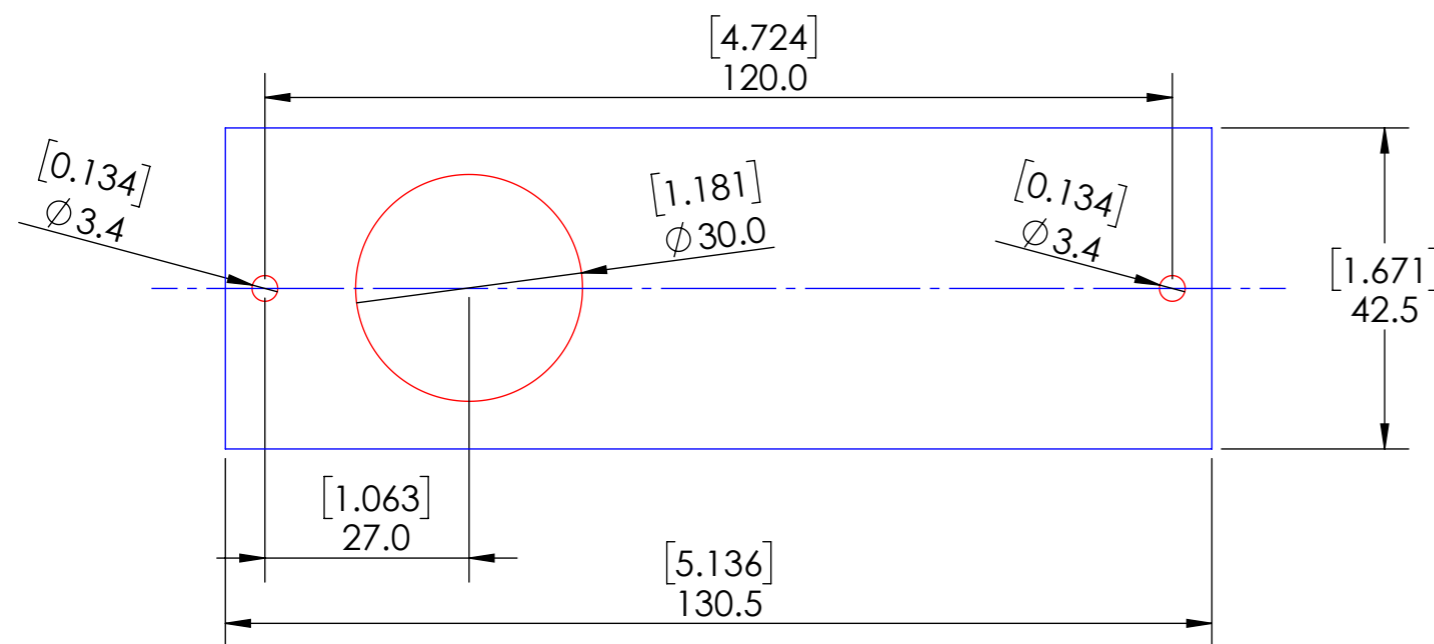
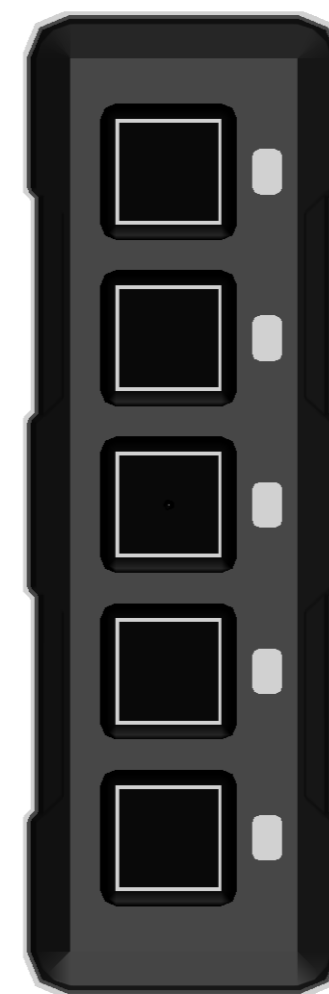




MOUNTING TEMPLATE.
3.4mm HOLES FOR MOUNTING, 30mm HOLE FOR WIRE PASS THROUGH
Cut out RED circles, BLUE square is over all outer dimensions of Keypad.

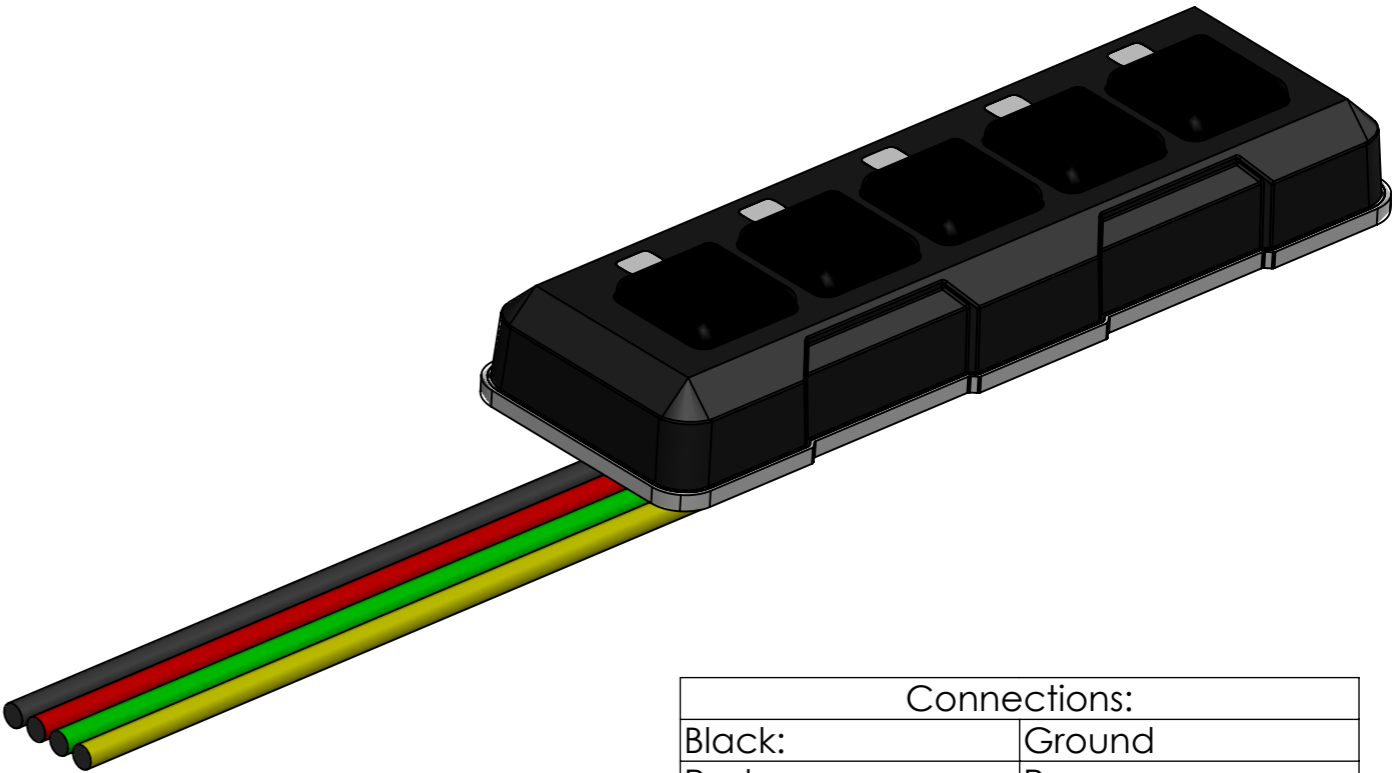


Mounting requires 2 x M3 bolts. Max length of bolt threaded into the case must not exceed 6mm. Torque spec of bolts 1.35Nm.



DIMENSIONING AND TOLERANCING PER ASME Y14.5 - 2009 APPLY. <u>UNLESS OTHERWISE SPECIFIED</u> Tolerances Inch: Tolerances Metric: .X ± .1 X ± .2 ANGLES ± 2° .XX ± .03 X ± .7 .XXX ± .010 .XX ± .25 ✓125			SHALL MEET REQUIREMENTS OF ENC 4E00711 ENVIRONMENTAL COMPLIANCE SPECIFICATION PRODUCE PART FROM CAD MODEL ERROR!:CAD FILE			Metric DO NOT SCALE DRAWING 					
MATERIAL Valox 3900 & LSR			DESCRIPTION SK51 CAN Keypad								
FINISH MT11020			PART NUMBER 58700032			DRAWING NUMBER 58020032				REVISION X	
CAD FILE			SCALE 1:1 AND NOTED			SHEET SIZE A3		SHEET 1 OF 2			

Specifications:	
CAN	
Protocol:	SAE J1939
Termination Resistor:	None
Electrical	
Operating Voltage:	6 to 35 VDC
Current Consumption:	200mA max 5mA min
Physical	
Case Material:	High impact PBT/PC, epoxy filled
Button Material:	Silicone with dual layered paint and top coat
Weight:	Approximately 100g/0.2lb
Operating Temperature:	-40 to +85°C (-40 to +185°F)
Environmental Sealing:	IP67 Front, IP65 Back



Connections:	
Black:	Ground
Red:	Power
Yellow:	CAN Hi
Green:	CAN Low

DIMENSIONING AND TOLERANCING PER ASME Y14.5 - 2009 APPLY. UNLESS OTHERWISE SPECIFIED			SHALL MEET REQUIREMENTS OF ENC 4E00711 ENVIRONMENTAL COMPLIANCE SPECIFICATION			INCH DO NOT SCALE DRAWING								
Tolerances Inch: Tolerances Metric: .X ± .1 X ± 2 .XX ± .03 .X ± .7 .XXX ± .010 .XX ± .25 ANGLES ± 2° ✓125			PRODUCE PART FROM CAD MODEL ERROR!:CAD FILE											
MATERIAL Valox 3900 and LSR			DESCRIPTION SK51 CAN Keypad											
FINISH MT1 1020			PART NUMBER 58700032			DRAWING NUMBER 58020032			REVISION					
			CAD FILE			SCALE 1:2 AND NOTED			SHEET SIZE A3		SHEET 2 OF 2		X3	