

PV780 Standard Configuration Screen Layout

Expected Data Source Addresses on CAN PORT 1

Engine Data = 0

Transmission Data = 3 (press, temp, wheel based vehicle speed)

Machine Data = 0

Fuel Level Data = 160

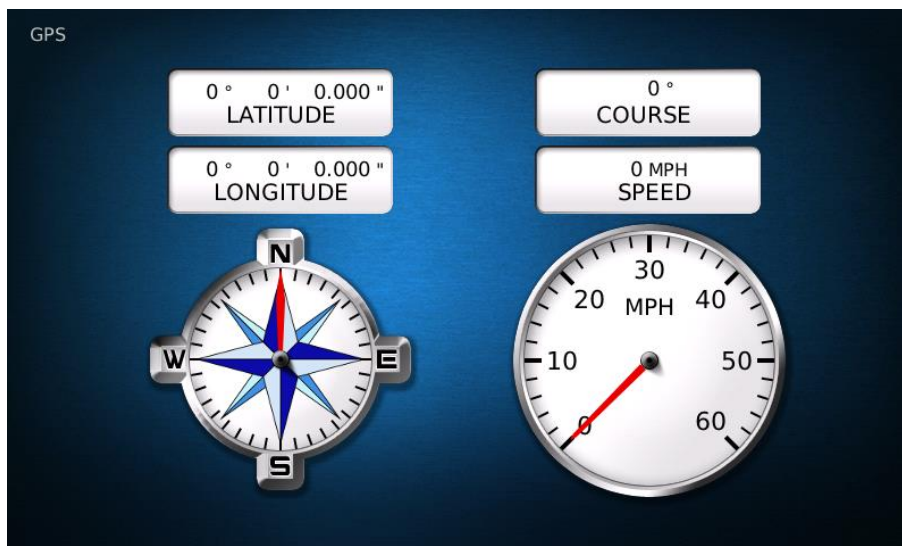
Current Gear = 0

GPS Data = Any Address

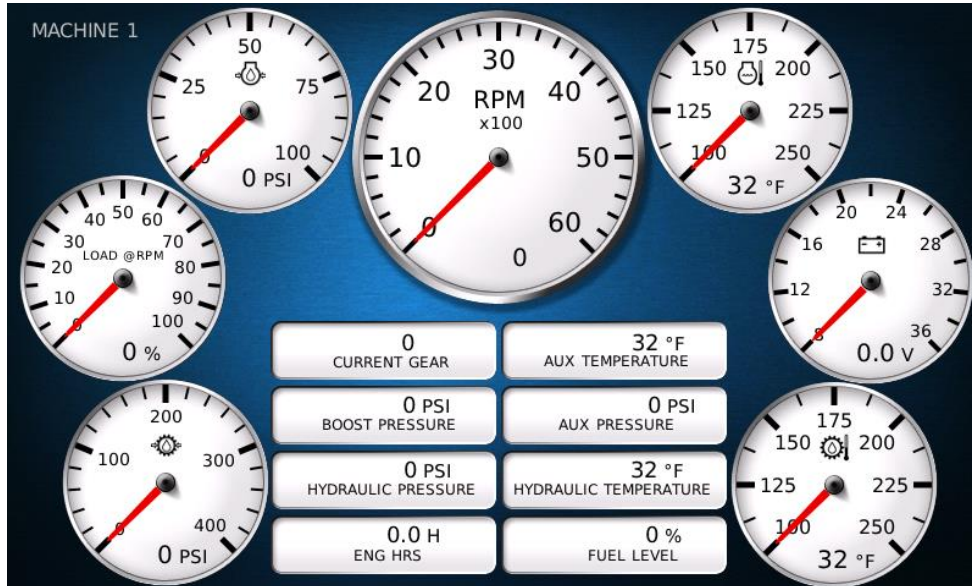
Engine



GPS



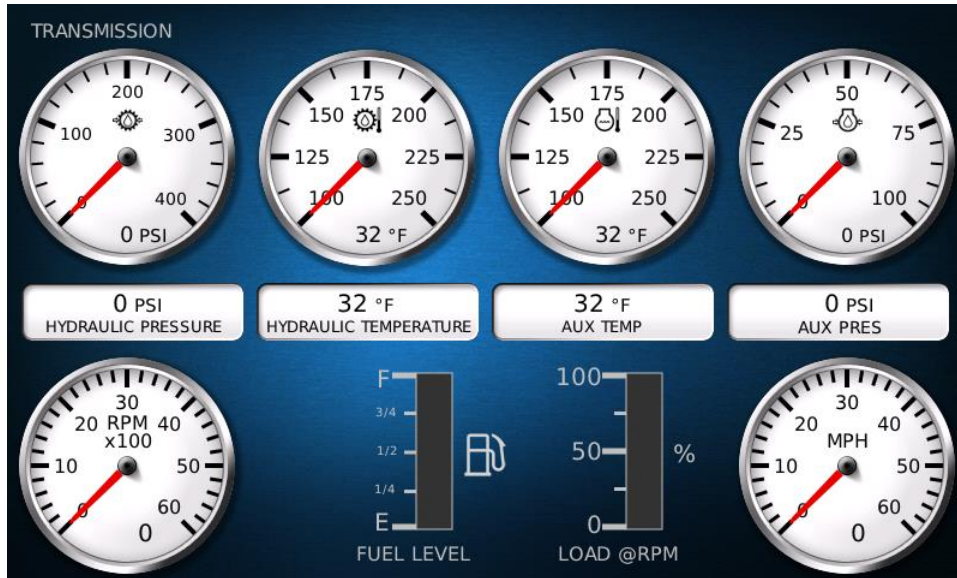
Machine 1



Machine 2



Transmission



Video

