

Application 2 – Anti-Stall

Control a drilling implement while automatically adjusting the drill speed and direction in order to maintain critical engine RPM.

Button activates
Drill Mode



Forward
Speed

2x Digital Input
1x Analog Input, 0 to +5V
(2.5V center)

Reverse
Speed

+ Controller
- Supply Power
(9-32VDC)



Dual Coil
Proportional Output

Forward

Reverse

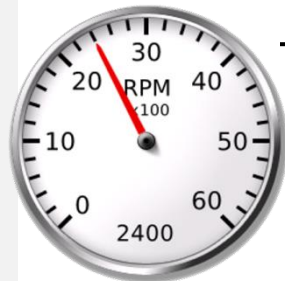
Joystick

Activate the Drill Mode with a push of a button. Move the Joystick left or right to increase the speed and change the direction of the drill. Center being zero speed, and all the way left being the maximum speed forward, and all of the way right being the max speed reverse of the drill.

RPM

Automatically checks for the Engine RPM SPN190. If there is no message, the application will automatically use the pulse input. Set the minimum and critical engine RPM values for your application needs within the Program Loader Monitor.

1x Universal Input, (Pulse RPM)
(J1939 CAN Bus RPM)



Forward/Reverse

Once the drill is activated, the joystick controls the speed of the drill. If the drill begins to dig in to hard dirt or rock and bogs the engine RPM, the application automatically reduces the output to the drill in order to recover the engine RPM. If the engine RPM drops below the stop set point, the application automatically stops the drill in order to recover the engine RPM. Once the RPM recovers, the drill will be active and the operator can resume function.

